



TOCHI LOOP Wireless Phone Charger

The Tochi Table Lamp, which achieves a balance between the warmth of wood and the simplicity of concrete, designed by Ishi, will add aesthetics to the space with its wireless phone charging feature.

Natural oil, which does not contain harmful compounds, is used in coloring.



Application
Interior

Mounting Type
Desktop

Product code
1016

Material
Concrete
Wood
Metal
Textile Cable

Wood Color
Wenge, Antique Oak, Smoked Oak, Jatoba

Concrete Color
Grey

Metal Cap Color
Black

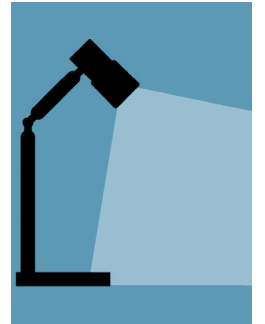
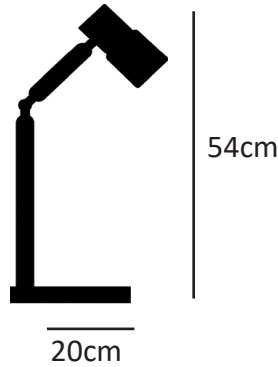
Joint
Aging

Wireless Phone Charger
DC: 5V/1A (Max)

Lampholder Type (supplied without light bulb)
G9, 1xRyet Led G9 (903.465.54) 2.4W 2700K

Dimension

Light Distribution



Weight
1050gr. excluding bulb.

Packaged Size and Weight
Box size 22x22x40cm Boxed weight 1440gr.

TOCHI Loop



The Tochi Table Lamp, which achieves a balance between the warmth of wood and the simplicity of concrete, designed by Ishi, will add aesthetics to the space with its wireless phone charging feature.

Natural oil, which does not contain harmful compounds, is used in coloring.



Application
Interior

Mounting Type
Desktop

Product code
1016

Material
Concrete
Wood
Metal
Textile Cable

Wood Color
Wenge, Antique Oak, Smoked Oak, Jatoba

Concrete Color
Grey

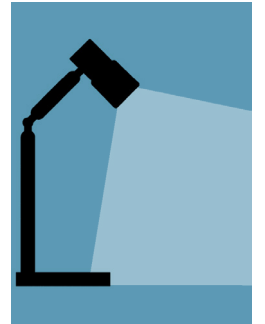
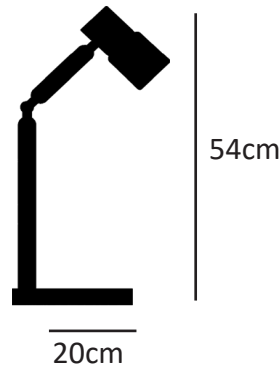
Metal Cap Color
Black

Joint
Aging

Lampholder Type (supplied without light bulb)
G9, 1xRyet Led G9 (903.465.54) 2.4W 2700K

Dimension

Light Distribution



Weight
1100gr. excluding bulb.

Packaged Size and Weight
Box size 22x22x40cm Boxed weight 1500gr.